



Capsule Pressure Gauges

Stainless Steel Case

High Overpressure Safety

Low Pressure Series • Type 632.51

Pressure Gauges

Application

All stainless steel pressure gauge. Suitable for corrosive environments and gaseous media of very low pressure.

Sizes

4" and 6" (100 and 160 mm)

Accuracy

± 1.5% of span

Ranges

1 to 240 "H₂O (2.5 to 600 mbar)
or equivalent other units of pressure or vacuum

Working Range

Steady: Full scale value
Fluctuating: 0.9 x full scale value

Overpressure Safety

50 x scale range (100 psi / 7 bar maximum)

Operating Temperature

Ambient: -4°F (-20°C) to 140°F (60°C)
Media: max. + 212°F (+100°C)

Weather Protection

Weather resistant (NEMA 4X / IP 54)

Standard Features

Connection

Material: 316 stainless steel
1/2" NPT or G 1/2 A - 22 mm flats

Capsule Element

316 stainless steel

Pressure Chamber

316 stainless steel

Gasket

PTFE

Movement

Stainless steel

Dial

White aluminum with black lettering

Pointer

Black aluminum, adjustable

Case

Stainless steel with stainless steel bayonet ring.
Blow-out plug in back of case

Window

Laminated safety glass

Gauge Mounting

Requires mounting on a strong pipe, gauge valve or gauge mounting bracket. Optional pipe or wall mounting bracket is available.



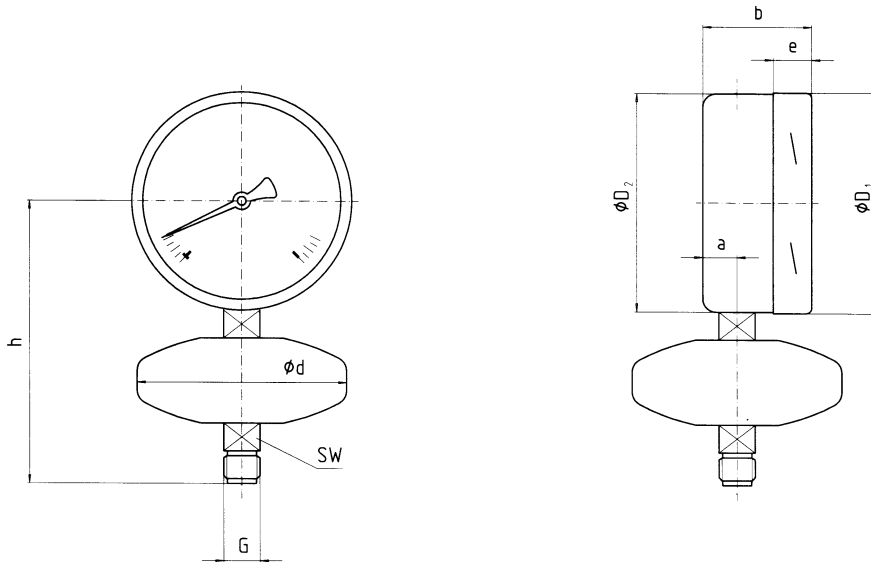
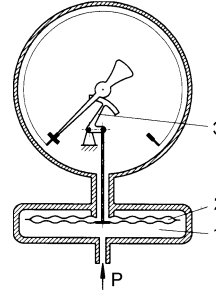
Order Options

Other threaded pressure connection
Pipe or wall mounting bracket (see data sheet AAM 09.07)
Front or rear flange (note wide diameter of the pressure chamber when mounting)
Accuracy ±1.0% of span (not all ranges)
Extra overpressure safety (not all ranges)
Alarm contacts (see data sheet AAE 08.01)
Transmitters (see data sheet AE 08.02)

Dimensions:

Design and operating principle

- The sealed chamber (1) contains the capsule element (2).
- The outer walls of the capsule element are exposed to the pressure medium.
- Any deflection of the capsule walls will be transmitted to the instrument's movement and pointer.
- A pressure greater than maximum scale value will cause the capsule to fully collapse. The specially shaped walls of the capsule prevent deformation of the capsule and provide overpressure protection.



TYPE	WEIGHT	KEY	a	b	D1	D2	d	e	G	h	SW
632.51 4"	3.5 lb	mm	15.5	49.5	101	99	1335	17.5	--	170	22
		in.	.61	1.95	3.97	3.9	5.23	.69	1/2" NPT	6.69	.87
632.51 6"	4.6 lb	mm	15.5	49.5	1616	159	133	17.5	--	200	22
		in.	.61	1.95	6.34	6.25	5.23	.69	1/2" NPT	7.87	.87

**THE MEASURE OF
Total Performance™**

Ordering Information:

State computer part number (if available) / type number / size / range / connection size and location / options required.

Specifications given in this price list represent the state of engineering at the time of printing. Modifications may take place and the specified materials may change without prior notice



WIKAI Instrument Corporation
 1000 Wiegand Boulevard
 Lawrenceville, Georgia 30043-5868
 Tel: 770-513-8200 Fax: 770-338-5118
<http://www.wika.com> e-mail: info@wika.com